

9. Coolum's Heart

9.1 Description

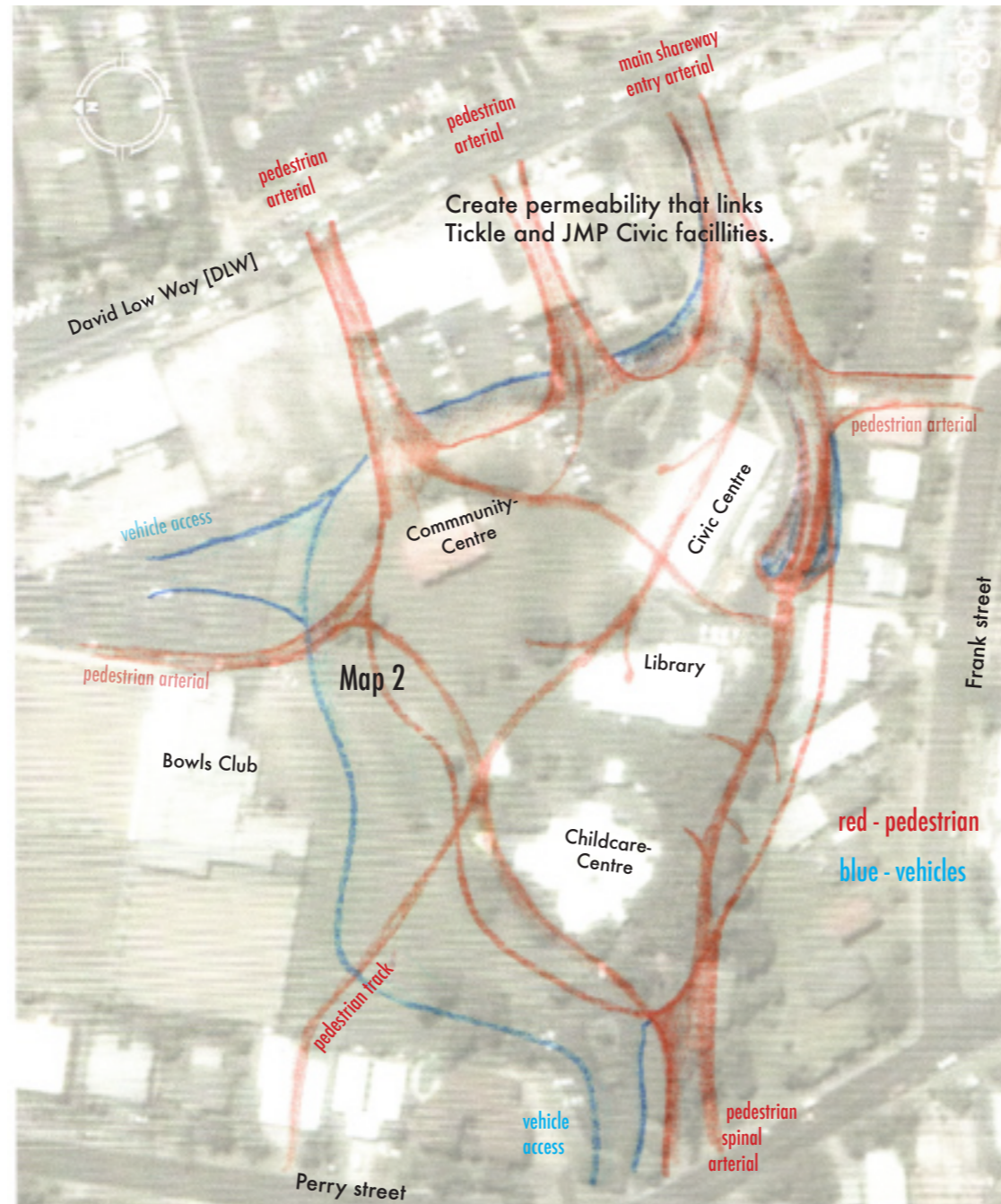
The revitalisation of Jack Morgan Park as the central Cultural Civic space, "Coolum's Heart," is the central theme within the Conceptual Art Framework and a celebrated place for all paths to connect both physically and metaphorically. It symbolises the central axis point between the natural surrounding landform and is the movement connector between the Village.

Urban design recommendations for this space include developing the three main paths throughout the Village (themes, stories) and the 'Coolum tracks' to create a journey that invites locals and guests to explore and enjoy the secondary art elements of street furniture, sculpture, exhibitions, and other ephemeral events.

Including numerous clear and activated pathways with visual permeability into David Low Way and Tickle Park.

Open up the opportunity for the community to establish a perma-culture garden around the community centre, promoting sustainable resources.

Jack Morgan Park - The Cultural and Civic Heart of Coolum



Map 4

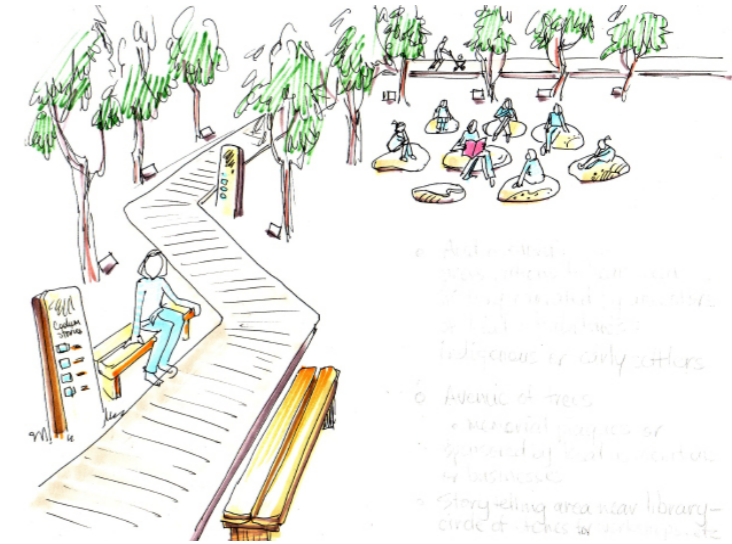


Image - Pam Walpole

9.2 Art - themes, stories and placemaking

The key metaphor for art projects within this site is the The Bora Ring and connected pathways linking indigenous and next settler historical stories.

Possibly in the the form of a circular floorscaping art piece embedded into the ground or a giant ball sculpture depicting the central point of the connection of all paths, this space could also incorporate imagery of the local natural landforms and its significance as a central axis point, associated legends and stories.

Jack Morgan - 1915 small farm at Morgan close grew bananas, pineapples, beans and tomatoes. Jack Morgan Senior was instrumental in the formation of the Coolum Beach Lifesavers Club in 1919. Worked actively in the School of Arts, Councillor.. "It is fitting that a Youth Centre, originally the Memorial School of Arts Hall, and which later became a cinema, has been placed in this park" (Windolf, 2004).